



***Success of Innovation***



*Product List*

*2020*



Detnov Security S.L. started its activity in 2007 in Barcelona. We are a company **specialized in development and manufacture of fire alarm systems** for any kind of installations as offices, hospitals, hotels, shopping malls, university campuses, residential buildings, etc.

We have a team of highly qualified professionals with more than 25 years of experience in the field of fire protection. **Our R&D team designs each of our products** from advanced production technologies to meet the market needs.

We have our own laboratories for electromagnetic compatibility (EMC / EMI) and calibration, which allows us to guarantee the quality of all our products with the highest standards exigency.









# index

## ADRESSABLE DETECTION SYSTEMS

Modular addressable control panels - VESTA Series .....	06
Modular addressable control panel accessories - VESTA .....	06
Addressable control panels - CAD-150 series .....	08
Addressable control panels with printer - CAD-150 series .....	
Addressable repeaters - CAD-150 series .....	10
Voice Alarm System .....	10
Addressable control panel accessories - CAD-150 series .....	11
Graphic software - CAD-150 series .....	12
Addressable detectors - 200A series .....	13
Addressable detectors with built-in isolator - 200A series .....	13
Addressable detectors - 200A seroes (black).....	14
Addressable detector accesories .....	14
Addressable and standalone gas detectors .....	15
Addressable call points .....	16
Addresable sounders and beacons .....	17
Addressable modules .....	18
Addressable modules with built-in isolator .....	20
Accessories for addressable modules .....	22

## CONVENTIONAL DETECTION SYSTEMS

Conventional control panels - ECO series .....	23
Conventional control panels - CCD-100 series .....	23
Accessories for conventional control panels - CCD-100 series .....	24
Conventional detectors - 200 series .....	26
Conventional detectors - 200 series (black) .....	26
Accessories for conventional detectors - 200 series .....	27
Conventional call points .....	28
Conventional sounders .....	29
Conventional beacons .....	32

## EXTINGUISHING SYSTEM

25

## SPECIAL DETECTORS

Beam detector .....	33
Duct detector .....	34
Residential fire alarm systems .....	34

## ACCESORIES

Power supplies .....	35
----------------------	----

## CO DETECTION SYSTEMS

CO control panels .....	36
CO detectors .....	37

## Modular addressable control panels - VESTA Series



### CAD-250

**Modular addressable fire alarm control panel expandable up to 32 loops, by means of additional 2 loops cards (TBUD-250) and extension boxes (CAD-250-B; CAD-250-BLED).** It does not incorporate detection loops. 10" touch screen with graphic management. 2048 programmable zones, 256 areas and 1024 groups. 1.000.000 event history logs, free configuration and maintenance software, USB and Ethernet configuration ports, 2 supervised sounder outputs and 2 free relay outputs. Auxiliary output of 24V 500 mA. Network capacity up to 64 control panels (T-Network). Ethernet on board for programming and remote maintenance. Metal box. Multilingual. CPR certificate EN 54-2 and EN 54-4. Requires 2 batteries (not included). Dimensions: 533 x 453 x 212 mm.



### CAD-250-P

**Modular addressable fire alarm control panel with built-in printer, expandable up to 32 loops, by means of additional 2 loops cards (TBUD-250) and extension boxes (CAD-250-B; CAD-250-BLED).** It does not incorporate detection loops. 10" touch screen with graphic management. 2048 programmable zones, 256 areas and 1024 groups. 1.000.000 event history logs, free configuration and maintenance software, USB and Ethernet configuration ports, 2 supervised sounder outputs and 2 free relay outputs. Auxiliary output of 24V 500 mA. ANetwork capacity up to 64 control panels (T-Network). Ethernet on board for programming and remote maintenance. Metal box. Multilingual. CPR certificate EN 54-2 and EN 54-4. Requires 2 batteries (not included). Dimensions: 533 x 453 x 212 mm.

## Modular addressable control panel accessories - VESTA



### CAD-250-B

**Expansion box up to 8 loops, by means of additional 2 loops cards (TBUD-250) for modular addressable control panels CAD-250.** 2 supervised sounder outputs and 2 free relay outputs. Auxiliary output of 24V 500 mA. Requires 2 batteries (not included).



### CAD-250-BLED

**Expansion box up to 8 loops, by means of additional 2 loops cards (TBUD-250) for modular addressable control panels CAD-250.** 2 supervised sounder outputs and 2 free relay outputs. Auxiliary output of 24V 500 mA. 500 LEDs to visualize the status of the zones (250 alarm LEDs and 250 fault LEDs). Requires 2 batteries (not included).



### TBUD-250

**2 loops microprocessor expansion card (500 addresses).** 250 addresses per loop (detectors, modules, sounders and manual call points). To be used in CAD-250 addressable control panels.



### TOT-250

**Totem mounting accessory for CAD-250 addressable control panels.** Required when CAD-250-B or CAD-250-BLED expansion boxes are used.



### TMB-252

**Communication card for modular addressable control panels CAD-250.** Includes Ethernet port, RS485 output for network connection of control panels (T-Network), 2 x RS485 for integrations, output for serial printer. Includes electric isolation circuit between nodes. 1.000 meters maximum distance between nodes.



### TMBFI-252

**Fiber optic communication card for modular addressable control panels CAD-250.** Includes Ethernet port, RS485 output for network connection of control panels (T-Network), 2 x RS485 for integration, output for serial printer. Includes electric isolation circuit between nodes. 1.000 meters maximum distance between nodes. Allows mixed RS485 and fiber optic connection.

## Addressable control panels - CAD-150 series



### CAD-150-1-MINI

**Addressable fire alarm control panel with 1 loop.** Up to of 100 addresses (detectors, modules, sounders or manual call points). Self-search and self-diagnosis functions. 250 programmable zones, 20 alarm and fault led display zones, 6.000 event history logs, free configuration and maintenance software, configuration via USB port, 2 supervised sounder outputs and 2 configurable relay outputs. Graphic LCD display. Auxiliary output of 24V 500 mA. ABS plastic casing for wall mounting and even prepared to be embedded into it. Multilingual keyboard. Able to be networked to F-Network (32 nodes) or S-Network (64 nodes) via RS485 or fiber optics. Modbus output for integrations with TMB-151 or TMB-251. Full monitoring and remote control with Detnov Cloud Application. CPR certificate EN 54-2, EN 54-4. Requires 2 batteries not included of 7,2Ah. Dimensions: 430 x 268 x 109 mm.



### CAD-150-1

**Addressable fire alarm control panel with 1 loop.** Up to of 250 addresses (detectors, modules, sounders or manual call points). Self-search and self-diagnosis functions. 250 programmable zones, 20 alarm and fault led display zones, 6.000 event history logs, free configuration and maintenance software, configuration via USB port, 2 supervised sounder outputs and 2 configurable relay outputs. Graphic LCD display. Auxiliary output of 24V 500 mA. ABS plastic casing for wall mounting and even prepared to be embedded into it. Multilingual keyboard. Able to be networked to F-Network (32 nodes) or S-Network (64 nodes) via RS485 or fiber optics. Modbus output for integrations with TMB-151 or TMB-251. Full monitoring and remote control with Detnov Cloud Application. CPR certificate EN54-2, EN54-4 and EN54-13. Requires 2 batteries not included of 7,2Ah. Dimensions: 430 x 268 x 109 mm.



### CAD-150-2

**Addressable fire alarm control panel with 2 loops.** Up to of 500 addresses (detectors, modules, sounders or manual call points). Self-search and self-diagnosis functions. 250 programmable zones, 20 alarm and fault led display zones, 6.000 event history logs, free configuration and maintenance software, configuration via USB port, 2 supervised sounder outputs and 2 configurable relay outputs. Graphic LCD display. Auxiliary output of 24V 500 mA. ABS plastic casing for wall mounting and even prepared to be embedded into it. Multilingual keyboard. Able to be networked to F-Network (32 nodes) or S-Network (64 nodes) via RS485 or fiber optics. Modbus output for integrations with TMB-151 or TMB-251. Full monitoring and remote control with Detnov Cloud Application. CPR certificate EN54-2, EN54-4 and EN54-13. Requires 2 batteries not included of 7,2Ah. Dimensions: 430 x 268 x 109 mm.



### CAD-150-2-MB

**Addressable fire alarm control panel with 2 loops.** Up to of 500 addresses (detectors, modules, sounders or manual call points). Self-search and self-diagnosis functions. 250 programmable zones, 20 alarm and fault led display zones, 6.000 event history logs, free configuration and maintenance software, configuration via USB port, 2 supervised sounder outputs and 2 configurable relay outputs. Graphic LCD display. Auxiliary output of 24V 500 mA. Metal box. Multilingual keyboard. Able to be networked to F-Network (32 nodes) or S-Network (64 nodes) via RS485 or fiber optics. Modbus output for integrations with TMB-151 or TMB-251. Full monitoring and remote control with Detnov Cloud Application. CPR certificate EN 54-2, EN 54-4 and EN 54-13. Requires 2 batteries not included of 7,2Ah. Dimensions: 430 x 360 x 120 mm.



### CAD-150-4

**Addressable fire alarm control panel with 4 loops.** Up to of 1.000 addresses (250 addresses per loop: detectors, modules, sounders or manual call points). Self-search and self-diagnosis functions. 250 programmable zones, 6.000 event history logs, free configuration and maintenance software, configuration via USB port, 2 supervised sounder outputs and 2 configurable relay outputs. Graphic LCD display. Auxiliary output of 24V 500mA. Metal box. Multilingual keyboard. Able to be networked to F-Network (32 nodes) or S-Network (64 nodes) via RS485 or fiber optics. Modbus output for integrations with TMB-151 or TMB-251. Full monitoring and remote control with Detnov Cloud Application. CPR certificate EN54-2, EN54-4 and EN54-13. Requires 2 batteries not included of 7,2Ah. Dimensions: 430 x 360 x 120 mm.



### CAD-150-8

**Addressable fire alarm control panel with 4 loops expandable up to 8 loops, by means of 2 additional loops cards (TBUD-150).** Up to of 2,000 addresses (250 free addresses per loop: detectors, modules, sounders or call points). Auto-search function, 250 programmable zones, 40 alarm and fault display zones via leds, 6.000 event history logs, free configuration and maintenance software, USB port configuration, 2 supervised sounder outputs and 2 free relay outputs. Graphic LCD display. Auxiliary output of 24V 500 mA. Able to be networked to F-Network (32 nodes) or S-Network (64 nodes) via RS485 or fiber optics. Modbus output for integrations with TMB-151 or TMB-251. Full monitoring and remote control with Detnov Cloud Application. Metal box, multilingual keyboard. CPR certificate EN54-2, EN54-4 and EN54-13. Requires 2 batteries not included of 18Ah. Dimensions: 525 x 450 x 120 mm.



**CAD-150-8-PLUS**

**Addressable fire alarm control panel with 4 loops expandable up to 8 loops, by means of 2 additional loops card (TBUD-150).** Up to of 2,000 addresses (250 free addresses per loop: detectors, modules, sounders or call points). Auto-search function, 250 programmable zones, 40 alarm and fault display zones via leds, 6,000 event history logs, free configuration and maintenance software, USB port configuration, 2 supervised sounder outputs and 2 free relay outputs. Graphic LCD display. Auxiliary output of 24V 500 mA. Able to be networked to F-Network (32 nodes) or S-Network (64 nodes) via RS485 or fiber optics. Modbus output for integrations with TMB-151 or TMB-251. Full monitoring and remote control with Detnov Cloud Application. Metal box, multilingual keyboard. CPR certificate EN54-2, EN54-4 and EN54-13. Requires 2 batteries not included of 24Ah. Dimensions: 525 x 450 x 200 mm.

**CAD-150-4-RACK**

**Addressable fire alarm control panel with 4 loops in rack format.** Up to of 1,000 addresses (250 addresses per loop: detectors, modules, sounders or call points). Self-search and self-diagnosis function. 250 programmable zones, 6,000 event history log, free configuration and maintenance software, configuration via USB port, 2 supervised sounder outputs and 2 configurable relay outputs. Graphic LCD display. Auxiliary output of 24V 500mA. Metal box. Multilingual keyboard. Able to be networked to F-Network (32 nodes) or S-Network (64 nodes) via RS485 or fiber optics. Modbus output for integrations with TMB-151 or TMB-251. Full monitoring and remote control with Detnov Cloud Application. CPR certificate EN54-2, EN54-4 and EN54-13. Requires 2 batteries not included of 7,2Ah. Dimensions: 430 x 360 x 120 mm.

## Addressable control panels with printer - CAD-150 Series

**CAD-150-4-P**

**Addressable fire alarm control panel with 4 loops with printer built-in.** Up to of 1,000 addresses (250 addresses per loop: detectors, modules, sounders or manual call points). Self-search and self-diagnosis functions. 250 programmable zones, 6,000 event history logs, free configuration and maintenance software, configuration via USB port, 2 supervised siren outputs and 2 configurable relay outputs. Graphic LCD display. Auxiliary output of 24V 500mA. Metal box. Multilingual keyboard. Includes TMB-251 communication card for connection to the network S-Network (64 nodes) of control panels and repeaters through RS485. CPR certificate EN54-2, EN54-4 and EN54-13. Requires 2 batteries not included of 7,2Ah. Dimensions: 430 x 360 x 120 mm

**CAD-150-8-P**

**Addressable fire alarm control panel with 4 loops expandable up to 8 loops with printer built-in, by means of 2 additional loops cards (TBUD-150).** Up to of 2,000 addresses (250 free addresses per loop: detectors, modules, sounders or call points). Auto-search function, 250 programmable zones, 40 alarm and fault display zones via leds, 6,000 event history logs, free configuration and maintenance software, USB port configuration, 2 supervised sounder outputs and 2 free relay outputs. Graphic LCD display. Auxiliary output of 24V 500 mA. Metal box, multilingual keyboard. Includes TMB-251 communication card for connection to the network S-Network (64 nodes) of control panels and repeaters through RS485. CPR certificate EN 54-2, EN 54-4 and EN 54-13. Requires 2 batteries not included of 18Ah. Dimensions: 525 x 450 x 120 mm.

**CAD-150-8-PLUS-P**

**Addressable fire alarm control panel with 4 loops expandable up to 8 loops with printer built-in, by means of 2 additional loops card (TBUD-150).** Up to of 2,000 addresses (250 free addresses per loop: detectors, modules, sounders or call points). Auto-search function, 250 programmable zones, 40 alarm and fault display zones via leds, 6,000 event history logs, free configuration and maintenance software, USB port configuration, 2 supervised sounder outputs and 2 free relay outputs. Graphic LCD display. Auxiliary output of 24V 500 mA. Metal box, multilingual keyboard. Includes TMB-251 communication card for connection to the network S-Network (64 nodes) of control panels and repeaters through RS485. CPR certificate EN 54-2, EN 54-4 and EN 54-13. Requires 2 batteries not included of 18Ah. Dimensions: 525 x 450 x 200 mm.

## Addressable repeaters - CAD-150 series



### RAD-150

**Bidirectional repeater for Detnov addressable CAD-150 series.** Allows the remote supervision control of control panels networked (F-Network) up to 32 nodes. It shows the same incidences reflected in the control panel. It can be added in ring or bus networks configurations. LCD display and 4 control keys (reset, mute buzzer, mute sounders and activate sounders). Includes RS485 communication card (TRED-150 for F-Network). ABS plastic casing for wall mounting and even prepared to be embedded into it. Requires 230 Vac and 2 batteries of 7,2Ah each (not included). Dimensions: 443 x 268 x 109 mm.



### CAD-150-R

**Bidirectional repeater for Detnov addressable CAD-150 series.** Allows the remote supervision control of a fire control panel networked (S-Network) up to 32 nodes. It shows the same incidences reflected in the control panel. It can be added in ring or bus networks configurations. LCD display and 4 control keys (reset, mute buzzer, mute sounders and activate sounders). Includes RS485 communication card (TMB-251 for S-Network). ABS plastic casing for wall mounting and even prepared to be embedded into it. Requires 230 Vac and 2 batteries of 7,2Ah each (not included). CPR certificate EN54-2 and EN54-4. Dimensions: 443 x 268 x 109 mm.



### RTD-150E

**Graphical repeater for Detnov addressable CAD-150 series.** Allows the visualization and graphical management of the fire alarm system through a (HDMI) monitor. Accepts all picture formats (jpeg, bmp, gif, etc.). Easy and intuitive use. It is recommended to use a touch screen interface. HDMI output and Ethernet connection for the connection of a repeaters network, using the existing Ethernet and Wi-Fi infrastructure. One of the repeaters must be connected to the fire system by means of a TMB-151 or TMB-251 communication cards. Power supply included.



### RTD-150T

**Graphical 10" tablet repeater for Detnov addressable CAD-150 series.** It allows the visualization and graphic management of the fire alarm system through maps and pictures. Easy and intuitive use. Accepts all picture formats (jpeg, bmp, gif, etc.). Wi-Fi output available for networking several graphical repeaters RTD-150E. One of the repeaters must be connected to the fire system by means of a TMB-151 or TMB-251 communication cards. Dimensions: 296 x 195 x 32 mm. Power supply included.



### RTD-150W

**Wireless graphical 7" tablet repeater for Detnov addressable CAD-150 series.** It allows the visualization and graphic management of the fire alarm system through maps and pictures. Easy and intuitive use. Accepts all picture formats (jpeg, bmp, gif, etc.). Wi-Fi connection is required and at least one RTD-150E or RTD-150T acting as a master device. Dimensions: 188 x 113 x 10 mm. Power supply included.

## Voice alarm system



### CAD-150-EVAC

**Integrated voice evacuation system including of addressable fire control panel CAD-150-4 and NEO voice evacuation control unit EN54-2, EN54-4, EN 54-16 and EN 60849.**

# Addressable control panels accessories - CAD-150



## TBUD-150

**2 loops microprocessor expansion card (500 addresses).** 250 addresses per loop (detectors, modules, sounders and manual call points). To be used in CAD-150-8 and CAD-150-8-PLUS.



## TRED-150

**Network connection RS485 communication card (F-Network) for addressable CAD-150 control panels.** Allows ring or bus installation networking. Up to 32 nodes. Includes electric isolation circuit between nodes. Printer output via serial connection. 1.000 meters maximum distance between nodes.



## TMB-151

**RS485 network communication (F-Network) and Modbus output card, for addressable CAD-150 control panels.** Includes Modbus protocol output for integrations with third parties. Network system installation in ring or bus. Includes electric isolation circuit between nodes. 1.000 meters maximum distance between nodes..



## TMBFI-151

**Fiber optic network communication (F-Network) and Modbus output card, for networking addressable CAD-150 panels or repeaters.** Includes Modbus protocol output for integrations with third parties. Network system installation in ring or bus. It incorporates electric isolation circuit between nodes. Allows mixed RS485 and fiber optic connection.



## TMB-251

**Communication card for addressable control panels CAD-150.** Includes Ethernet port, RS485 output for network connection S-Network (64 nodes), 2 x RS485 for Modbus integration, RS232 output for serial printer Includes. Includes electric isolation circuit between nodes. 1.000 meters maximum distance between nodes. Detnov Cloud Integration.



## TMBFI-251

**Fiber optic communication card for control panels CAD-150.** Includes Ethernet port, RS485 output for network connection S-Network (64 nodes), 2 x RS485 for Modbus integration, RS232 output for serial printer Includes. Includes electric isolation circuit between nodes. 1.000 meters maximum distance between nodes. Detnov Cloud Integration.



## TED-151-CL

**TCP / IP communication card for our conventional CCD-100 or addressable CAD-150 control panels.** Remote monitoring and control of the fire alarm control panel through Detnov Cloud application.





### PGD-200

**Hand-held programmer for 200A addressable detectors range and 400 series devices (modules, call points and sounders).** Allows the display of the device address, analogue value of the detectors and consecutive address programming. Includes 3 batteries of 9V.



### SCD-150

**CAD-150 series addressable control panels range configuration, commissioning and maintenance software.** PC connection via USB cable.



### CUSB-150

**CAD-150 series addressable control panels range configuration, commissioning and maintenance software.** PC connection via USB cable.

## Graphical Software - CAD-150 series



### SGD-151-1

**Graphic software license for one addressable control panel CAD-150 series.** Control, supervision and management of the fire alarm system in graphic environment (PC).



### SGD-151-4

**Graphic software license for up to 4 addressable control panels CAD-150 series.** Control, supervision and management of the fire alarm system in graphic environment (PC).



### SGD-151-10

**Graphic software license for up to 10 addressable control panels CAD-150 series.** Control, supervision and management of the fire alarm system in graphic environment (PC).



### SGD-151-32

**Graphic software license for up to 32 addressable control panels CAD-150 series.** Control, supervision and management of the fire alarm system in graphic environment (PC).

## Addressable detectors - 200A series



### DOD-220A

**Addressable optical smoke detector, with dirt compensation and algorithm verification.** Led status indicator and output for remote pilot indicator PAD-10 or buzzer BUD-200. White color. Allows installation without polarity. Requires connection base Z-200 or Z-200-H. Anti-theft system (only with Z-200). CPR certificate EN 54-7. Dimensions: 100 x 40 mm.



### DOTD-230A

**Addressable optical & heat detector, with dirt compensation and algorithm verification.** Led status indicator and output for remote pilot indicator PAD-10 or buzzer BUD-200. White color. Allows installation without polarity. Requires connection base Z-200 or Z-200-H. Anti-theft system (only with Z-200). CPR certificates EN 54-5 and EN 54-7. Dimensions: 100 x 40 mm.



### DTD-210A

**Addressable heat (58°C fixed temperature and thermal rate of rise) detector, with algorithm verification.** Led status indicator and output for remote pilot indicator PAD-10 or buzzer BUD-200. White color. Allows installation without polarity. Requires base Z-200 or Z-200-H. Anti-theft system (only with Z-200). CPR certificate EN 54-5. Dimensions: 100 x 40 mm.



### DTD-215A

**Addressable high temperature detector (fixed at 78°C), with algorithm verification.** Led status indicator and output for remote pilot indicator PAD-10 or buzzer BUD-200. White color. Allows installation without polarity. Requires base Z-200 or Z-200-H. Anti-theft system (only with Z-200). CPR certificate EN 54-5. Dimensions: 100 x 40 mm.

## Addressable detectors with built-in isolator - 200A series



### DOD-220A-I

**Addressable optical smoke detector with built-in isolator, with dirt compensation and algorithm verification.** Led status indicator and output for remote pilot indicator PAD-10 or buzzer BUD-200. White color. Requires connection base Z-200 or Z-200-H. Anti-theft system (only with Z-200). CPR certificate EN 54-7 and EN 54-17. Dimensions: 100 x 40 mm.



### DOTD-230A-I

**Addressable optical & heat detector with built-in isolator, with dirt compensation and algorithm verification.** Led status indicator and output for remote pilot indicator PAD-10 or buzzer BUD-200. White color. Requires connection base Z-200 or Z-200-H. Anti-theft system (only with Z-200). CPR certificates EN 54-5, EN 54-7 and EN 54-17. Dimensions: 100 x 40 mm.



### DTD-210A-I

**Addressable heat (58°C fixed temperature and thermal rate of rise) detector with built-in isolator, with algorithm verification.** Led status indicator and output for remote pilot indicator PAD-10 or buzzer BUD-200. White color. Requires base Z-200 or Z-200-H. Anti-theft system (only with Z-200). CPR certificate EN 54-5 and EN 54-17. Dimensions: 100 x 40 mm.



### DTD-215A-I

**Addressable high temperature detector (fixed at 78°C) with built-in isolator, with algorithm verification.** Led status indicator and output for remote pilot indicator PAD-10 or buzzer BUD-200. White color. Requires connection base Z-200 or Z-200-H. Anti-theft system (only with Z-200). CPR certificate EN 54-5 and EN 54-17. Dimensions: 100 x 40 mm.

## Addressable detectors - 200A series (black)



### DOD-220A-B

**Addressable optical smoke detector, with dirt compensation and algorithm verification.** Led status indicator and output for remote pilot indicator PAD-10 or buzzer BUD-200. Black color. Allows installation without polarity. Requires connection base Z-200-B or Z-200-B-H. Anti-theft system (only with Z-200). CPR certificate EN 54-7. Dimensions: 100 x 40 mm.



### DOTD-230A-B

**Addressable optical & heat detector, with dirt compensation and algorithm verification.** Led status indicator and output for remote pilot indicator PAD-10 or buzzer BUD-200. Black color. Allows installation without polarity. Requires connection base Z-200-B or Z-200-B-H. Anti-theft system (only with Z-200). CPR certificates EN 54-5 and EN 54-7. Dimensions: 100 x 40 mm.



### DTD-210A-B

**Addressable heat (58°C fixed temperature and thermal rate of rise) detector, with algorithm verification.** Led status indicator and output for remote pilot indicator PAD-10 or buzzer BUD-200. Black color. Allows installation without polarity. Requires base Z-200-B or Z-200-B-H. Anti-theft system (only with Z-200). CPR certificate EN 54-5. Dimensions: 100 x 40 mm.



### DTD-215A-B

**Addressable high temperature detector (fixed at 78°C), with algorithm verification.** Led status indicator and output for remote pilot indicator PAD-10 or buzzer BUD-200. Black color. Allows installation without polarity. Requires connection base Z-200-B or Z-200-B-H. Anti-theft system (only with Z-200). CPR certificate EN 54-5. Dimensions: 100 x 40 mm.

## Addressable detectors accessories - 200A



### Z-200

**Connection base for 200 and 200A series detectors.** It has an anti-theft detector system. Stainless steel contacts. White color. Dimensions: 5 x 100 mm.



### Z-200-H

**Deep connection base for 200 and 200A series detectors.** It has an anti-theft detector system. Stainless steel contacts. Ceiling mounted with conduit entries for standards 20mm conduit. White color. Dimensions: 43 x 100 mm.



### STD-200

**Euro-mounting base for Z-200 connection base.** It allows the connection base to be ceiling mounted with conduit entries for standards 20mm conduit. White color.



### Z-200-B

**Connection base for 200-B and 200A-B series detectors.** It has an anti-theft detector system. Stainless steel contacts. Black color. Dimensions: 5 x 100 mm.





### Z-200-B-H

**Deep connection base for 200-B and 200A-B series detectors.** It has an anti-theft detector system. Stainless steel contacts. Ceiling mounted with conduit entries for standards 20mm conduit. Black color. Dimensions: 43 x 100 mm.



### STD-200-B

**Euro-mounting base for Z-200-B connection base.** It allows the connection base to be ceiling mounted with conduit entries for standards 20mm conduit. Black color.



### PAD-10

**Remote indicator for 200 and 200A detectors series 200A.** Installed in enclosed or concealed enclosures. 5mA very low consumption. Dimensions: 80 x 80 x 27 mm.



### BUD-200

**Remote indicator for 200 and 200A detectors series 200A.** Installed in enclosed or concealed enclosures. 5mA very low consumption. Dimensions: 80 x 80 x 27 mm.

## Addressable and stand alone gas detectors



### DGD-600

**Natural Gas / City Gas (methane) detector for residential use.** 24 Vdc supply required. Maximum consumption: 65 mA. IP32D. Includes alarm buzzer (85db). Standalone or able to be connected to the Detnov addressable loop. Includes alarm relay and fault relay. Conforms to EN 50194-1. Dimensions: 89.6 x 146.5 x 39 mm. Test button. 3 status LEDs: Service, fault and alarm. Wall mounting or DIN rail.



### DGD-600-AC

**Natural Gas / City Gas (methane) detector for residential use.** 230 Vac supply required. Maximum consumption: 65 mA. IP32D. Includes alarm buzzer (85db). Standalone or able to be connected to the Detnov addressable loop. Includes alarm relay and fault relay. Conforms to EN 50194-1. Dimensions: 89.6 x 146.5 x 39 mm. Test button. 3 status LEDs: Service, fault and alarm. Wall mounting or DIN rail.



### DGD-620

**Liquefied petroleum gases (butane and propane) detector for residential use.** 24 Vdc supply required. Maximum consumption: 65 mA. IP32D. Includes alarm buzzer (85db). Standalone or able to be connected to the Detnov addressable loop. Includes alarm relay and fault relay. Dimensions: 89.6 x 146.5 x 39 mm. Test button. 3 status LEDs: Service, fault and alarm. Wall mounting or DIN rail.



### DGD-620-AC

**Liquefied petroleum gases (butane and propane) detector for residential use.** 230 Vac supply required. Maximum consumption: 65 mA. IP32D. Includes alarm buzzer (85db). Standalone or able to be connected to the Detnov addressable loop. Includes alarm relay and fault relay. Dimensions: 89.6 x 146.5 x 39 mm. Test button. 3 status LEDs: Service, fault and alarm. Wall mounting or DIN rail.

## Addressable call points



### MAD-451-I

**Addressable manual call point with built-in isolator.** LED status indicator and test key. Red color. CPR certificates EN54-11 and EN54-17. Dimensions: 85 x 85 x 55 mm.



### MAD-450

**Addressable manual call point.** LED status indicator and test key. Allows installation without polarity. Red color. CPR certificate EN54-11. Dimensions: 98 x 98 x 48 mm.



### MAD-450-I

**Addressable manual call point with built-in isolator.** LED status indicator and test key. Red color. CPR certificates EN54-11 and EN54-17. Dimensions: 98 x 98 x 48 mm.



### TBD-450

**Protective plastic cover, for indoors PCD-100, MAD-450 or MAD-450-I manual call points.**



### SMD-450

**Call point recessing bezel for indoor use, PCD-100, MAD-450 or MAD-450-I.** Red color.



### MAD-450-IW

**Addressable manual call point IP67 with built-in isolator.** Suitable for outdoor applications. LED status indicator and test key. Red color. Dimensions: 119 x 128 x 62 mm.



### TBD-450-IW

**Protective plastic cover for RP-GS1, PCD-100WP, MAD-451-I and MAD-450-IW.**

## Addressable sounders and beacons



### MAD-461-I

**Addressable loop sounder with isolator.** Low power consumption, acoustic power 82.5 dB. It takes just one address in the loop. Color red. For indoor use. IP21. CPR certificate EN54-3 and EN54-17. Dimensions: 65 x 90 mm.



### MAD-464-I

**Addressable loop sounder with built-in isolator.** Low power consumption. 32 tones and 3 configurable volumes (Low, Medium, High). Acoustic power from 78.3 dBA to 104.6 dBA depending on the selected tone. It takes just one address in the loop. Red color. IP33C. Deep base. CPR certificate EN 54-3 and EN 54-17. Dimensions: 100 x 75 mm



### MAD-465-I

**Addressable loop sounder with beacon and built-in isolator.** Low power consumption. 32 tones and 3 configurable volumes (Low, Medium, High). Acoustic power 76 dBA to 117 dBA depending on the selected tone. It takes just one address in the loop. Red color. IP33C. Deep base. CPR certificate EN 54-3 and EN 54-17. Dimensions: 100 x 75 mm

**NEW**



### MAD-464-I-W

**Addressable loop sounder with built-in isolator.** Low power consumption. 32 tones and 3 configurable volumes (Low, Medium, High). Acoustic power from 78.3 dBA to 104.6 dBA depending on the selected tone. It takes just one address in the loop. White color. IP33C. Deep base. CPR certificate EN 54-3 and EN 54-17. Dimensions: 100 x 75 mm

**NEW**



### MAD-465-I-W

**Addressable loop sounder with beacon and built-in isolator.** Low power consumption. 32 tones and 3 configurable volumes (Low, Medium, High). Acoustic power 76 dBA to 117 dBA depending on the selected tone. It takes just one address in the loop. White color. IP33C. Deep base. CPR certificate EN 54-3 and EN 54-17. Dimensions: 100 x 75 mm



### MAD-472

**Addressable sounder base.** 200A series detector compatible. CPR Certified EN54-3. Acoustic power: 80dB. Indoor use. IP30. It takes just one address in the loop. Dimensions: 150 x 100 mm.



### MAD-473

**Addressable sounder base with beacon.** 200A series detector compatible. CPR Certified EN54-3. Acoustic power: 80dB. Indoor use. IP30. It takes just one address in the loop. Dimensions: 150 x 100 mm.



### TBD-470

**Protective cap for the MAD-472 and MAD-473 sounder bases.**

**NEW**



### PAD-10A-I

**Addressable remote indicator with built-in isolator.** Great brightness. It occupies a direction in the loop. Dimensions: 80 x 80 x 27 mm.



## Addressable modules



### MAD-401

**Addressable monitor module with 1 supervised technical input for device status indication providing NC or NO contact.** It takes one address in the loop. Power supplied from the loop. LED status indicator. Connection through removable strips up to 2.5mm<sup>2</sup> section. Possibility of being installed in DIN rail or flat to wall mounting in box BOX-ONE. Non polarity installation. Consumption less than 300µA at rest. Red color. Dimensions: 100 x 82 x 23 mm. CPR certificate EN54-18.



### MAD-402

**Addressable monitor module with 2 supervised technical inputs for devices status signaling providing NC or NO contact.** It takes two addresses in the loop. Power supplied from the loop. LED status indicator. Connection through removable strips up to 2.5mm<sup>2</sup> section. Possibility of being installed in DIN rail or flat to wall mounting in box BOX-ONE. Consumption less than 300µA at rest. Non polarity installation. Red color. Dimensions: 100 x 82 x 23 mm. CPR certificate EN54-18.



### MAD-411

**Addressable control module for 1 relay output, provides one contact C, NO, NC.** It takes one address in the loop. Power supplied from the loop. LED status indicator. Connection through removable strips up to 2.5mm<sup>2</sup> section. Possibility of being installed in DIN rail or flat to wall mounting in box BOX-ONE. Consumption less than 300µA at rest. Non polarity installation. Red color. Dimensions: 100 x 82 x 23 mm. CPR certificate EN54-18.



### MAD-412

**Addressable control module of 2 relay outputs, provides two contacts C, NA, NC non-resettable.** It takes two addresses in the loop. Power supplied from the loop. LED status indicator. Connection through removable strips up to 2.5mm<sup>2</sup> section. Possibility of being installed in DIN rail or flat to wall mounting in box BOX-ONE. Consumption less than 300µA at rest. Non polarity installation. Red color. Dimensions: 100 x 82 x 23 mm. CPR certificate EN54-18.



### MAD-421

**Addressable monitor and control module with 1 supervised technical input for status indication of devices that provides NC or NO contact and 1 voltage-free relay output providing non-resettable C, NO, NC contact.** It takes two addresses in the loop. Power supplied from the loop. LED status indicator. Connection through removable strips up to 2.5mm<sup>2</sup> section. Possibility of being installed in DIN rail or flat to wall mounting in box BOX-ONE. Consumption less than 300µA at rest. Non polarity installation. Red color. Dimensions: 100 x 82 x 23 mm. CPR certificate EN54-18.



### MAD-422

**Addressable monitor and control module with of 2 supervised technical inputs, for the devices status signaling that provide NC or NO contact and 2 voltage-free relay outputs that provide two non-resettable C, NO, NC contacts.** It takes four addresses in the loop. Power supplied from the loop. LED status indicator. Connection through removable strips up to 2.5mm<sup>2</sup> section. Possibility of being installed in DIN rail or flat to wall mounting in box BOX-ONE. Consumption less than 300µA at rest. Non polarity installation. Red color. Dimensions: 100 x 82 x 23 mm. CPR certificate EN54-18.



### MAD-431

**Addressable control module of 1 monitored 24V output, for the activation of optical-acoustic signaling devices or maneuvers that require power, discriminating the fault of cut or short circuit in said line.** It takes one loop address. Requires 24 Vdc auxiliary power supply. LED status indicator. Connection through removable strips up to 2.5mm<sup>2</sup> section. Possibility of being installed in DIN rail or flat to wall mounting in box BOX-ONE. Consumption less than 300µA at rest. Allows installation without polarity. Red color. Dimensions: 100 x 82 x 23 mm. CPR certificate EN54-18.



### MAD-432

**Addressable control module of 2 supervised 24V outputs, for the activation of optical-acoustic signaling devices or maneuvers that require power, discriminating the fault of cut or short circuit in said line.** It takes two loop addresses. Requires 24 Vdc auxiliary powers. LED status indicator. Connection through removable strips up to 2.5mm<sup>2</sup> section. Possibility of being installed in DIN rail or flat to wall mounting in box BOX-ONE. Consumption less than 300μA at rest. Allows installation without polarity. Red color. Dimensions: 100 x 82 x 23 mm. CPR certificate EN54-18.



### MAD-441

**Addressable monitor module of 1 conventional zone, allows connection of up to 20 conventional detectors and / or 32 conventional manual call points.** Can identify between detector alarm and push button, between the fault by cutting or by short circuit in the zone. It takes one loop address. Requires 24 Vdc auxiliary power. LED status indicator. Connection through removable strips up to 2.5mm<sup>2</sup> section. Possibility of being installed in DIN rail or flat to wall mounting in box BOX-ONE. Consumption less than 300μA at rest. Allows installation without polarity. Red color. Dimensions: 100 x 82 x 23 mm. CPR certificate EN54-18.



### MAD-442

**Addressable monitor module of 2 conventional zones, allows the connection of up to 20 conventional detectors and / or 32 conventional manual call points per zone.** Can identify between detector alarm and push button, between the fault by cutting or by short circuit in the zone. It takes two loop addresses. Requires 24 Vdc auxiliary power supply. LED status indicator. Connection through removable strips up to 2.5mm<sup>2</sup> section. Possibility of being installed in DIN rail or flat to wall mounting in box BOX-ONE. Consumption less than 300μA at rest. Allows installation without polarity. Red color. Dimensions: 100 x 82 x 23 mm. CPR certificate EN54-18.



### MAD-481

**Addressable control module of 1 relay output voltage free of 240 Vac and 5A which provides a non-resettable contact C, NO, NC.** It takes one loop address. Requires 24 Vdc auxiliary power supply. LED status indicator. Connection through removable strips up to 2.5mm<sup>2</sup> section. Possibility of being installed in DIN rail or flat to wall mounting in box BOX-ONE. Consumption less than 300μA at rest. Allows installation without polarity. Red color. Dimensions: 100 x 82 x 23 mm.



### MAD-490

**Addressable short-circuit protection isolating module, with status LED, which isolates the loop section between two isolators in the event of a short-circuit in the loop.** Takes no address in the loop. Power supplied from the loop. Connection through removable strips up to 2.5mm<sup>2</sup> section. Possibility of being installed in DIN rail or flat to wall mounting in box BOX-ONE. Consumption less than 300μA at rest. Red color. Dimensions: 100 x 82 x 23 mm. CPR certificate EN54-17.

## Addressable modules with built-in isolator



### MAD-401-I

**Addressable monitor module with built-in isolator of 1 supervised technical input for status indication of equipment providing NC or NO contact.** It takes one loop address. Power supplied from the loop. LED status indicator. Connection through removable strips up to 2.5mm<sup>2</sup> section. Possibility of being installed in DIN rail or flat to wall mounting in box BOX-ONE. Consumption less than 300µA at rest. Red color. Dimensions: 100 x 82 x 23 mm. CPR certificate EN54-18 and EN54-17.



### MAD-402-I

**Addressable monitor module with built-in isolator of 2 supervised technical inputs for status indication of equipment providing NC or NO contact.** It takes two loop addresses. Power supplied from the loop. LED status indicator. Connection through removable strips up to 2.5mm<sup>2</sup> section. Possibility of being installed in DIN rail or flat to wall mounting in box BOX-ONE. Consumption less than 300µA at rest. Red color. Dimensions: 100 x 82 x 23 mm. CPR certificate EN54-18 and EN54-17.



### MAD-411-I

**Addressable control module with built-in isolator of 1 voltage-free relay output providing non-resettable C, NO, NC contact.** It takes one loop address. Power supplied from the loop. LED status indicator. Connection through removable strips up to 2.5mm<sup>2</sup> section. Possibility of being installed in DIN rail or flat to wall mounting in box BOX-ONE. Consumption less than 300µA at rest. Red color. Dimensions: 100 x 82 x 23 mm. CPR certificate EN54-18 and EN54-17.



### MAD-412-I

**Addressable control module with built-in isolator of 2 relay outputs free of voltage that provides two contacts C, NO, NC non-resettable.** It takes two loop addresses. Power supplied from the loop. LED status indicator. Connection through removable strips up to 2.5mm<sup>2</sup> section. Possibility of being installed in DIN rail or flat to wall mounting in box BOX-400. Consumption less than 300µA at rest. Red color. Dimensions: 100 x 82 x 23 mm. CPR certificate EN54-18 and EN54-17.



### MAD-421-I

**Addressable monitor and control module with built-in isolator of 1 supervised technical input for the status signaling of equipment that provides NC or NO contact and 1 voltage-free relay output providing non-resettable C, NO, NC contact.** It takes two loop addresses. Power supplied from the loop. LED status indicators. Connection through removable strips up to 2.5mm<sup>2</sup> section. Possibility of being installed in DIN rail or flat to wall mounting in box BOX-ONE. Consumption less than 300µA at rest. Red color. Dimensions: 100 x 82 x 23 mm. CPR certificate EN54-18 and EN54-17.



### MAD-422-I

**Addressable monitor module and control with built-in isolator of 2 supervised technical inputs for the status signaling of equipment that provide NC or NO contact and 2 voltage-free relay outputs providing two non-resettable C, NO, NC contacts.** It occupies four directions in the loop. Power supplied from the loop. LED status indicators. Connection through removable strips up to 2.5mm<sup>2</sup> section. Possibility of being installed in DIN rail or flat to wall mounting in box BOX-ONE. Consumption less than 300µA at rest. Red color. Dimensions: 100 x 82 x 23 mm. CPR certificate EN54-18 and EN54-17.





### MAD-431-I

**Addressable control module with built-in isolator of 1 monitored 24V output, for the activation of optical-acoustic signaling devices or maneuvers that require power, discriminating the breakdown or short-circuit fault in said line.** It takes one loop address. Requires 24 Vdc auxiliary power supply. LED status indicator. Connection through removable strips up to 2.5mm<sup>2</sup> section. Possibility of being installed in DIN rail or flat to wall mounting in box BOX-ONE. Consumption less than 300µA at rest. Red color. Dimensions: 100 x 82 x 23 mm. CPR certificate EN54-18 and EN54-17.



### MAD-432-I

**Addressable control module with built-in isolator of 2 supervised 24V outputs, for the activation of optical-acoustic signaling devices or maneuvers requiring power, discriminating the breakdown or short-circuit fault in said line.** It takes two loop addresses. Requires 24 Vdc auxiliary power supply. LED status indicator. Connection through removable strips up to 2.5mm<sup>2</sup> section. Possibility of being installed in DIN rail or flat to wall mounting in box BOX-ONE. Consumption less than 300µA at rest. Red color. Dimensions: 100 x 82 x 23 mm. CPR certificate EN54-18 and EN54-17.



### MAD-441-I

**Addressable monitor module with built-in isolator of 1 conventional zone, allows the connection of up to 20 conventional detectors and / or 32 conventional manual call points.** Can identify between detector alarm and push button, between the fault by cutting or by short circuit in the zone. It takes one loop address. Requires 24 Vdc auxiliary power supply. LED status indicator. Connection through removable strips up to 2.5mm<sup>2</sup> section. Possibility of being installed in DIN rail or flat to wall mounting in box BOX-ONE. Consumption less than 300µA at rest. Red color. Dimensions: 100 x 82 x 23 mm. CPR certificate EN54-18 and EN54-17.



### MAD-442-I

**Addressable monitor module with built-in isolator of 2 conventional zones, allows the connection of up to 20 conventional detectors and / or 32 conventional manual call points per zone.** Can identify between detector alarm and push button, between the fault by cutting or by short circuit in the zone. It takes two loop addresses. Requires 24 Vdc auxiliary power supply. LED status indicators. Connection through removable strips up to 2.5mm<sup>2</sup> section. Possibility of being installed in DIN rail or flat to wall mounting in box BOX-ONE. Consumption less than 300µA at rest. Red color. Dimensions: 100 x 82 x 23 mm. CPR certificate EN54-18 and EN54-17.



### MAD-405-I

**Addressable monitor module with built-in isolator of 5 supervised technical inputs for status indication of equipment providing NC or NO contact.** It takes five loop addresses. Power supplied from the loop. LED status indicator. Connection through removable strips up to 2.5mm<sup>2</sup> section. Includes mounting box. Dimensions: 172 x 170 x 48 mm. CPR certificate EN54-18 and EN54-17.



### MAD-409-I

**Addressable monitor module with built-in isolator of 10 supervised technical inputs for status indication of equipment providing NC or NO contact.** It takes ten loop addresses. Power supplied from the loop. LED status indicator. Connection through removable strips up to 2.5mm<sup>2</sup> section. Includes mounting box. Dimensions: 172 x 170 x 48 mm. CPR certificate EN54-18 and EN54-17.



### MAD-415-I

**Addressable control module with built-in isolator of 5 relay outputs free of voltage that provides two contacts C, NO, NC non-resettable.** It takes five loop addresses. Requires external 24 Vdc power supply. LED status indicator. Connection through removable strips up to 2.5mm<sup>2</sup> section. Includes mounting box. Dimensions: 172 x 170 x 48 mm. CPR certificate EN54-18 and EN54-17.



### MAD-419-I

**Addressable control module with built-in isolator of 10 relay outputs free of voltage that provides two contacts C, NO, NC non-resettable.** It takes ten loop addresses. Requires external 24 Vdc power supply. LED status indicator. Connection through removable strips up to 2.5mm<sup>2</sup> section. Includes mounting box. Dimensions: 172 x 170 x 48 mm. CPR certificate EN54-18 and EN54-17.



### MAD-425-I

**Addressable monitor module and control with built-in isolator of 5 supervised technical inputs for the status signaling of equipment that provide NC or NO contact and 5 voltage-free relay outputs providing two non-resettable C, NO, NC contacts.** It occupies 10 addresses in the loop. Requires external 24 Vdc power supply. LED status indicators. Connection through removable strips up to 2.5mm<sup>2</sup> section. Includes mounting box. Dimensions: 172 x 170 x 48 mm. CPR certificate EN54-18 and EN54-17.



### MAD-429-I

**Addressable monitor module and control with built-in isolator of 10 supervised technical inputs for the status signaling of equipment that provide NC or NO contact and 10 voltage-free relay outputs providing two non-resettable C, NO, NC contacts.** It occupies 20 addresses in the loop. Requires external 24 Vdc power supply. LED status indicators. Connection through removable strips up to 2.5mm<sup>2</sup> section. Includes mounting box. Dimensions: 172 x 170 x 48 mm. CPR certificate EN54-18 and EN54-17.

## Accessories for addressable modules



### BOX-ONE

**Transparent box for installation of one addressable module of the MAD-400 series.** Dimensions: 172 x 170 x 48 mm.



### BOX-SIX

**Transparent box for installation of addressable modules of the MAD-400 series.** Maximum capacity of 6 modules. Dimensions: 172 x 170 x 110 mm.

## Conventional control panels - ECO series



### CCD-020

**Conventional fire alarm control panel for 2 zones mounted on ABS plastic housing.** Discriminates between detector alarm and manual call points alarm. Up to 32 detectors per zone. It has 2 configurable supervised sounder outputs (500 mA each output), alarm and fault relay outputs free of voltage, auxiliary 24V output (500 mA maximum consumption), 24V resettable output (500 mA maximum consumption). Sounder output delay configurable on board. Multilingual keyboard. CPR certificate EN 54-2 and EN 54-4. Dimensions: 282 x 240 x 102 mm. Requires 2 batteries of 2,3 Ah (not included).



### CCD-040

**Conventional fire alarm control panel for 4 zones mounted on ABS plastic housing.** Discriminates between detector alarm and manual call points alarm. Up to 32 detectors per zone. It has 2 configurable supervised sounder outputs (500 mA each output), alarm and fault relay outputs free of voltage, auxiliary 24V output (500 mA maximum consumption), 24V resettable output (500 mA maximum consumption). Sounder output delay configurable on board. Multilingual keyboard. CPR certificate EN 54-2 and EN 54-4. Dimensions: 282 x 240 x 102 mm. Requires 2 batteries of 2,3 Ah (not included).

## Conventional control panels - CCD-100 series



### CCD-102

**Conventional fire alarm control panel for 2 zones mounted on ABS plastic housing.** Flush mount option. Discriminates between detector alarm and manual call points alarm. Up to 32 detectors per zone. Possibility to connect to PC via USB for complex programming. Integration with addressable systems directly within the loop. It has 2 configurable supervised sounder outputs (500 mA each output), alarm and fault relay outputs free of voltage, auxiliary 24V output (500 mA maximum consumption), 24V resettable output (500 mA maximum consumption) and 1 programmable external input. TSD100: 4 supervised sounder outputs, TMD-100: Modbus output for integrations, TPLD-100: integration to addressable loop. Monitoring and remote control tool through TED-151-CL card (Detnov Cloud Application). Multilingual keyboard. CPR certificate EN 54-2, EN 54-4 and EN 54-13. Dimensions: 443 x 268 x 109 mm. Requires 2 batteries of 7,2Ah (not included).



### CCD-104

**Conventional fire alarm control panel for 4 zones mounted on ABS plastic housing.** Flush mount option. Discriminates between detector alarm and manual call points alarm. Up to 32 detectors per zone. Possibility to connect to PC via USB for complex programming. Integration with addressable systems directly within the loop. It has two configurable supervised siren outputs (500 mA each output), alarm and fault relay outputs free of voltage, auxiliary 24V output (500 mA maximum consumption), 24V resettable output (500 mA maximum consumption) and 1 external input programmable. TSD100: 4 supervised siren outputs, TMD-100: Modbus output for integrations, TPLD-100: integration to addressable loop. Monitoring and remote control tool through TED-151-CL card (Detnov Cloud Application). Multilingual keyboard. CPR certificate EN 54-2, EN 54-4 and EN 54-13. Dimensions: 443 x 268 x 109 mm. Requires 2 batteries of 7,2Ah (not included).



### CCD-108

**Conventional fire alarm control panel for 8 zones mounted on ABS plastic housing.** Flush mount option. Discriminates between detector alarm and manual call points alarm. Up to 32 detectors per zone. Possibility to connect to PC via USB for complex programming. Integration with addressable systems directly within the loop. It has two configurable supervised siren outputs (500 mA each output), alarm and fault relay outputs free of voltage, auxiliary 24V output (500 mA maximum consumption), 24V resettable output (500 mA maximum consumption) and 1 external input programmable. TSD100: 4 supervised siren outputs, TMD-100: Modbus output for integrations, TPLD-100: integration to addressable loop. Monitoring and remote control tool through TED-151-CL card (Detnov Cloud Application). Multilingual keyboard. CPR certificate EN54-2, EN54-4 and EN54-13. Dimensions: 443 x 268 x 109 mm. Requires 2 batteries of 7,2 Ah (not included).



### CCD-112

**Conventional fire alarm control panel for 12 zones mounted on ABS plastic housing.** Flush mount option. Discriminates between detector alarm and manual call points alarm. Up to 32 detectors per zone. Possibility to connect to PC via USB for complex programming. Integration with addressable systems directly within the loop. It has two configurable supervised siren outputs (500 mA each output), alarm and fault relay outputs free of voltage, auxiliary 24V output (500 mA maximum consumption), 24V resettable output (500 mA maximum consumption) and 1 external input programmable. TSD100: 4 supervised siren outputs, TMD-100: Modbus output for integrations, TPLD-100: integration to addressable loop. Monitoring and remote control tool through TED-151-CL card (Detnov Cloud Application). Multilingual keyboard. CPR certificate EN 54-2, EN 54-4 and EN 54-13. Dimensions: 443 x 268 x 109 mm. Requires 2 batteries of 7,2 Ah (not included).

# Accessories for conventional control panels - CCD-100



## TRD-100

**Expansion card of 4 free voltage relay outputs for conventional CCD-100 control panels.** Maximum load: 10A at 30Vdc. Maximum 3 cards per control panel. Programmable via SWD-100 software.



## TSD-100

**4 supervised sounder outputs card, for conventional CCD-100 control panels, allowing four independent sounder outputs.** Maximum load: 500 mA per output. Maximum 3 cards per control panel. Programmable via SWD-100 software.



## TMD-100

**RS485 communication card for integration to a network using the Modbus protocol, for conventional CCD-100 panels.** Allows remote control of the main functions of the control fire panel and integrate it with third parties.



## TPLD-100

**Addressable loop gateway card for conventional CCD-100 and CCD-103 panels range.** Allows alarms and faults communication from the conventional control panel to the addressable loop of CAD-150 and CAD-250 series.



## TED-151-CL

**TCP / IP communication card for our conventional CCD-100 or addressable CAD-150 control panel ranges.** Remote monitoring and control of the fire alarm control panel through Detnov Cloud application.



## CCC-100

**USB configuration cable for the conventional CCD-100 range and CCD-103 extinguishing panel connection to a PC.**



## SWD-100

**Conventional control panel CCD-100 series configuration software.** PC Connection via CCC-100 cable.



## Extinguishing system



### CCD-103

**Extinguishing control panel for 1 risk (3 detection zones).** 1 output for the activation of the bottle and 1 output for activating the sign, 2 inputs for monitoring the bottle, manual call point inputs: release, abort and pause, 2 sounder outputs for the two possible states extinguishing process, configurable extinction fire delay, 3 modes of operation of the extinguishing block: Manual, automatic and canceled, 2 inputs for monitoring the enclosure: door and ventilation. Historical event log. Possibility to connect to PC via USB for complex programming and event download. Integrable to addressable systems directly from the addressable loop. Certificate EN 12094/1 and CPR EN 54-2 and EN 54-4. Dimensions: 443 x 268 x 109 mm. Requires 2 batteries of 7,2 Ah (not included).



### SWD-103

**Extinguishing control panel CCD-103 configuration software.** PC Connection via CCC-100 cable.



### PDD-100

**Release manual call point.** Yellow color. With test key, surface mount. Protective plastic cover included. Use for indoor applications. Includes resistance of 100 Ohm -2W. Dimensions: 98 x 98 x 48 mm.



### PPD-100

**Abort manual call point.** Color blue. With test key, surface mount. Protective plastic cover included. Indoor use. Includes resistance of 100 Ohm -2W. Dimensions: 98 x 98 x 48 mm.



### DOA FJ/CPD (SP-E)

**Indicator light with buzzer.** 24Vdc power supply required. High brightness LED lighting. Polycarbonate case with transparent front. White color. Included "EXTINGUISHING SYSTEM ACTIVATED" label. CPR certificate EN54-3.

## Conventional detectors - 200 series



### DOD-220

**Conventional optical smoke detector.** Led status indicator and output for remote pilot indicator PAD-10. White color. Allows installation without polarity. Requires connection base Z-200 or Z-200-H. Anti-theft system (only with Z-200). CPR certificate EN 54-7. Dimensions: 100 x 40 mm.



### DOTD-230

**Conventional optical and heat detector.** Led status indicator and output for remote pilot indicator PAD-10. White color. Allows installation without polarity. Requires connection base Z-200 or Z-200-H. Anti-theft system (only with Z-200). CPR certificate EN 54-5 and EN 54-7. Dimensions: 100 x 40 mm.



### DTD-210

**Conventional heat detector (58°C fixed temperature and 8°C/min thermal rate of rise).** Led status indicator and output for remote pilot indicator PAD-10. White color. Allows installation without polarity. Requires connection base Z-200 or Z-200-H. Anti-theft system (only with Z-200). CPR certificate EN 54-5. Dimensions: 100 x 40 mm.



### DTD-215

**Conventional heat detector (fixed temperature 78°C).** Led status indicator and output for remote pilot indicator PAD-10. White color. Allows installation without polarity. Requires connection base Z-200 or Z-200-H. Anti-theft system (only with Z-200). CPR certificate EN 54-5. Dimensions: 100 x 40 mm.

## Conventional detectors - 200 series (black)



### DOD-220-B

**Conventional optical smoke detector.** Led status indicator and output for remote pilot indicator PAD-10. Black color. Allows installation without polarity. Requires connection base Z-200-B or Z-200-B-H. Anti-theft system (only with Z-200). CPR certificate EN 54-7. Dimensions: 100 x 40 mm.



### DOTD-230-B

**Conventional optical and thermal for smoke and temperature detection.** Led status indicator and output for remote pilot indicator PAD-10. Black color. Allows installation without polarity. Requires connection base Z-200-B or Z-200-B-H. Anti-theft system (only with Z-200). CPR certificate EN 54-5 and EN 54-7. Dimensions: 100 x 40 mm.



### DTD-210-B

**Conventional heat detector (58°C fixed temperature and 8°C/min thermal rate of rise).** Led status indicator and output for remote pilot indicator PAD-10. Black color. Allows installation without polarity. Requires connection base Z-200-B or Z-200-B-H. Anti-theft system (only with Z-200). CPR certificate EN 54-5. Dimensions: 100 x 40 mm.



### DTD-215-B

**Conventional heat detector (fixed temperature 78°C).** Led status indicator and output for remote pilot indicator PAD-10. Black color. Allows installation without polarity. Requires connection base Z-200-B or Z-200-B-H. Anti-theft system (only with Z-200). CPR certificate EN 54-5. Dimensions: 100 x 40 mm.

## Conventional detectors accesories - 200 series



### Z-200

**Connection base for 200 and 200A series detectors.** It has an anti-theft detector system. Stainless steel contacts. White color. Dimensions: 5 x 100 mm.



### Z-200-H

**Deep connection base for 200 and 200A series detectors.** It has an anti-theft detector system. Stainless steel contacts. Ceiling mounted with conduit entris for standars 20mm conduit. White color. Dimensions: 43 x 100 mm.



### STD-200

**Euro-mounting base for Z-200 connection base.** It allows the connection base to be ceiling mounted with conduit entris for standars 20mm conduit. White color.



### Z-200-R

**Connection base with relay output for 200 series detectors.** Detector anti-theft system available. Stainless steel contacts. White color. Dimensions: 5 x 100 mm.



### Z-200-B

**Connection base for 200-B and 200A-B series detectors.** It has an anti-theft detector system. Stainless steel contacts. Black color. Dimensions: 5 x 100 mm.



### Z-200-B-H

**Deep connection base for 200-B and 200A-B series detectors.** It has an anti-theft detector system. Stainless steel contacts. Ceiling mounted with conduit entris for standars 20mm conduit. Black color. Dimensions: 43 x 100 mm.



### STD-200-B

**Euro-mounting base for Z-200-B connection base.** It allows the connection base to be ceiling mounted with conduit entris for standars 20mm conduit. Black color.



### PAD-10

**Remote indicator for 200 and 200A detectors series.** Installed in enclosed or concealed enclosures. 5mA very low consumption. Dimensions: 80x80x27mm.



### STI-9604

**Galvanized steel cage coated with white polyester for the protection of fire detectors 200 series.** It protects against accidental or malicious blows that could damage the correct functioning of the device.



### STI-9605

**Galvanized steel cage coated with white polyester for the protection of fire detectors 200 series with tube inlet viewed.** Protects against accidental or malicious punctures that could damage the correct operation of the device.

## Conventional call points



### PCD-100

**Conventional manual call point, with test key, for surface installation.** Suitable for indoor. Red color. Includes resistance of 100 Ohm.-2W. Dimensions: 98 x 98 x 48 mm. CPR certificate EN54-11.



### TBD-450

**Protective plastic cover, for indoors PCD-100, MAD-450 or MAD-450-I manual call points.**



### SMD-450

**Call point recessing bezel for indoor use, PCD-100, MAD-450 or MAD-450-I. Red color.**



### PCD-100WP

**Conventional manual call point IP67, with test key, for surface installation.** Suitable for outdoor. Red color. No resistance of 100 Ohm included.-2W. Dimensions: 119 x 128 x 62 mm. CPR certificate EN54-11.



### RP-GS2-02

**Conventional manual call point for evacuation and emergencies.** Green color, surface installation. Suitable for Indoors. Dimensions: 98 x 98 x 48 mm.



### TBD-450-IW

**Protective plastic cover for RP-GS2-02, PCD-100WP, MAD-451-I and MAD-450-IW.**



## Conventional sounders



### SCD-100

**Indoor alarm sounder.** 3 selectable tones. Power at 24Vdc/7mA. IP44. Red color. Acoustic power between 82,5dB. CPR certificate EN54-3. Dimensions: 65 x 90 mm.



### SCD-200

**Indoor alarm sounder.** 32 selectable tones. Power at 24Vdc / 7mA at 32mA according to tone. IP21. Red color. Acoustic power 95 up to 100 dB according to tone. CPR certificate EN54-3. Dimensions: 85x75 mm.



### SCD-210

**Outdoor alarm sounder.** 32 selectable tones. Power at 24Vdc / 7mA at 32mA according to tone. IP33C. Red color. Acoustic power 95 up to 100 dB according to tone. CPR certificate EN54-3. Dimensions: 100 x 75 mm.



### SFD-220

**Indoor alarm sounder with beacon.** 32 selectable tones. Power at 24Vdc / 8mA at 36mA according to tone. IP21. Red color. Acoustic power 78 up to 116 dB according to tone. CPR certificate EN54-3. Dimensions: 85 x 75 mm.



### SFD-230

**Indoor alarm sounder.** 32 selectable tones. Power at 24Vdc / 7mA at 32mA according to tone. IP43. White color. Acoustic power between 95 and 100 dB according to tone. CPR certificate EN54-3. Dimensions: 85x75 mm.



### SCD-200-W

**Indoor alarm sounder.** 32 selectable tones. Power at 24Vdc / 7mA at 32mA according to tone. IP21. Red color. Acoustic power 95 up to 100 dB according to tone. CPR certificate EN54-3. Dimensions: 85x75 mm.



### SCD-210-W

**Outdoor alarm sounder.** 32 selectable tones. Power at 24Vdc / 7mA at 32mA according to tone. IP65. White color. Acoustic power between 95 and 100 dB according to tone. CPR certificate EN54-3. Dimensions: 100 x 75 mm.



### SFD-220-W

**Indoor alarm sounder with beacon.** 32 selectable tones. Power at 24Vdc / 8mA at 36mA according to tone. IP43. White color. Acoustic power between 78 and 116 dB according to tone. CPR certificate EN54-3. Dimensions: 85 x 75 mm.



### SFD-230-W

**Outdoor alarm sounder with beacon.** 32 selectable tones. Power at 24Vdc / 8mA at 36mA according to tone. IP65. White color. Acoustic power between 78 and 116 dB according to tone. CPR certificate EN54-3. Dimensions: 100 x 75 mm.



### SFD-221C

**Indoor alarm sounder with white beacon for ceiling installation.** Flash cover C-2.4-7. IP21C, power to 24Vdc, consumption of 25 to 40mA depending on the tone, 32 tones. Acoustic power between 78 and 98 dB. Certificate EN54-3 and EN54-23.



### SFD-231C

**Indoor alarm sounder with white beacon for ceiling installation with deep base.** Flash cover C-2.4-7. IP33C, power to 24Vdc, consumption of 25 to 40mA depending on the tone, 32 tones. Acoustic power between 78 and 98 dB. Certificate EN54-3 and EN54-23.



### SFD-221W

**Indoor alarm sounder with white beacon for wall installation.** Flash cover W-2.4-8. IP21C, power to 24Vdc, consumption of 25 to 40mA depending on the tone, 32 tones. Acoustic power between 78 and 98 dB. Certificate EN54-3 and EN54-23.



### SFD-231W

**Indoor alarm sounder with white beacon for wall installation with deep base.** Flash cover W-2.4-8. IP33C, power to 24Vdc, consumption of 25 to 40mA depending on the tone, 32 tones. Acoustic power between 78 and 98 dB. Certificate EN54-3 and EN54-23.

**NEW**



### WCW99

**Sounder with beacon for indoor use.** 32 tones, 2 volumes and 2 selectable covers. Power supply: 10 to 60 Vdc, consumption: 8 to 14 mA. IP21. Red color. Acoustic power 98dB at 105 dB according to selected volume. Coverage: W-2.4x7 (0.5Hz) or W-3x8.8 (1Hz). CPR Certificate EN 54-3 and EN 54-23. Dimensions: 44 x 118 x 106 mm.

**NEW**



### WCW98

**Sounder with beacon for outdoor use.** 32 tones, 2 volumes and 2 selectable covers. Power supply: 10 to 60 Vdc, consumption: 8 to 14 mA. IP65. Red color. Acoustic power 98dB at 105 dB according to selected volume. Coverage: W-2.4x7 (0.5Hz) or W-3x8.8 (1Hz). CPR Certificate EN 54-3 and EN 54-23. Dimensions: 44 x 118 x 106 mm.

**NEW**



### WCW69

**Sounder with beacon for indoor use.** 32 tones, 2 volumes and 2 selectable covers. Power supply: 10 to 60 Vdc, consumption: 8 to 14 mA. IP21. White color. Acoustic power 98dB at 105 dB according to selected volume. Coverage: W-2.4x7 (0.5Hz) or W-3x8.8 (1Hz). CPR Certificate EN 54-3 and EN 54-23. Dimensions: 44 x 118 x 106 mm.

**NEW**



### WCW68

**Sounder with beacon for outdoor use.** 32 tones, 2 volumes and 2 selectable covers. Power supply: 10 to 60 Vdc, consumption: 8 to 14 mA. IP65. White color. Acoustic power 98dB at 105 dB according to selected volume. Coverage: W-2.4x7 (0.5Hz) or W-3x8.8 (1Hz). CPR Certificate EN 54-3 and EN 54-23. Dimensions: 44 x 118 x 106 mm.



### SCD-120

**Alarm sounder with beacon.** Power supply at 24V dc / 200 mA. Red color labeled "FIRE". Dimensions: 297 x 210 x 75 mm.



### HOLA F24EN (SP)

**Outdoor alarm sounder with beacon.** Power supply at 24V dc (100 to 200 mA depending the tone selected). Maximum acoustic power 108,76 dB. Red color labeled "FIRE". IP44. CPR certificate EN54-3. Dimensions: 335 x 220x 85 mm.



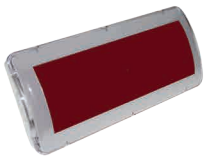
### MBF-6EV-24

**Indoor 6" alarm bell.** Low-power at 24 Vdc / 11 mA. Red color. Maximum acoustic power: 94 dB. CPR Certificate EN54-3. Dimensions: Ø 152 x 53 mm.



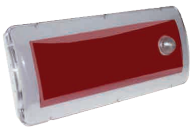
### MBA-6-BBX4

**Outdoor 6" alarm bell.** Low-power at 24 Vdc / 12 mA. Red color. IP55. Maximum acoustic power: 101 dB. CPR Certificate EN54-3. Dimensions: Ø 152 x 104 mm.



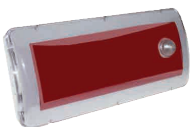
### DOA FJ/CPD (SP-A)

**Light indicator with buzzer.** 24 Vdc power supply. High brightness LED lighting. Polycarbonate case with transparent front. White color. "FIRE ALARM" label included. CPR certificate EN54-3.



### DOA K (SP-A)

**Light indicator with buzzer and beacon.** 24 Vdc power supply, low consumption 55 mA. Maximum acoustic power 91 dB. High brightness LED lighting. Polycarbonate case with transparent front. IP21 "FIRE ALARM" label included. CPR certificate EN54-3 and EN54-23. Dimensions: 331 x 150 x 68mm.



### DOA K/WP (SP-A)

**Light indicator with buzzer and beacon.** 24 Vdc power supply, low consumption 55 mA. Maximum acoustic power 91 dB. High brightness LED lighting. Polycarbonate case with transparent front. IP54 "FIRE ALARM" label included. CPR certificate EN54-3 and EN54-23. Dimensions: 331 x 150 x 68mm.

# Conventional Beacons



## PED-221C

**Beacon with white color glass and red base for ceiling installation.** Beacon cover C-3-8. IP21C, power to 24Vdc, consumption of 25 to 40 mA depending on the tone, 32 tones. Indoor use. Certificate EN54-23.



## PED-231C

**Beacon with white color glass and red base for installation in ceiling with deep base.** Beacon cover C-3-8. IP33C, power to 24Vdc, consumption of 25 to 40 mA depending on the tone, 32 tones. Indoor use. Certificate EN54-23.



## PED-221W

**Beacon with white flash and red base for wall installation.** Beacon cover W-2,4-8. IP21C, power to 24Vdc, consumption of 25 to 40 mA depending on the tone, 32 tones. Indoor use. Certificate EN54-23.



## PED-231W

**Beacon with white flash and red base for wall installation with deep base.** Beacon cover W-2,4-8. IP33C, power to 24Vdc, consumption of 25 to 40 mA depending on the tone, 32 tones. Indoor use. Certificate EN54-23.



## WBW99

**Beacon for indoor use.** 32 tones, 2 volumes and 2 selectable covers. Power supply: 10 to 60 Vdc, consumption: 8 to 14 mA. IP21. Red color. Acoustic power 98dB at 105 dB according to selected volume. Coverage: W-2.4x7 (0.5Hz) or W-3x8.8 (1Hz). CPR Certificate EN 54-3 and EN 54-23. Dimensions: 44 x 118 x 106 mm.



## WBW98

**Beacon for outdoor use.** 32 tones, 2 volumes and 2 selectable covers. Power supply: 10 to 60 Vdc, consumption: 8 to 14 mA. IP65. Red color. Acoustic power 98dB at 105 dB according to selected volume. Coverage: W-2.4x7 (0.5Hz) or W-3x8.8 (1Hz). CPR Certificate EN 54-3 and EN 54-23. Dimensions: 44 x 118 x 106 mm.



## WBW69

**Beacon for indoor use.** 32 tones, 2 volumes and 2 selectable covers. Power supply: 10 to 60 Vdc, consumption: 8 to 14 mA. IP21. White color. Acoustic power 98dB at 105 dB according to selected volume. Coverage: W-2.4x7 (0.5Hz) or W-3x8.8 (1Hz). CPR Certificate EN 54-3 and EN 54-23. Dimensions: 44 x 118 x 106 mm.



## WBW68

**Beacon for outdoor use.** 32 tones, 2 volumes and 2 selectable covers. Power supply: 10 to 60 Vdc, consumption: 8 to 14 mA. IP65. White color. Acoustic power 98dB at 105 dB according to selected volume. Coverage: W-2.4x7 (0.5Hz) or W-3x8.8 (1Hz). CPR Certificate EN 54-3 and EN 54-23. Dimensions: 44 x 118 x 106 mm.

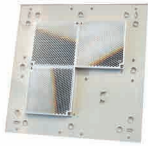


# Beam detector



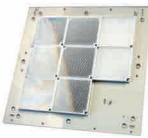
## FIREBEAM XTRA

**Beam detector for distances over 7 meters and up to 70 meters, expandable up to 140 or 160 meters with extension kits.** Separated head detector and controller for easy access to programming. IP65 for use outdoors or indoor with extreme environmental conditions. 24Vdc power supply. CPR certificate EN 54-12. Dimensions: detector 180x155x137mm, controller 185x120x62mm.



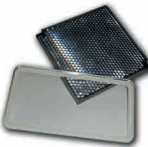
## 70KIT-140

**Mid range distance kit for beam detector FIREBEAM XTRA.** Use this for distances over 70 meters and up to 140 meters.



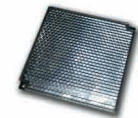
## 140KIT-160

**Long range distance kit for beam detector FIREBEAM XTRA.** Use this for distances over 140 meters and up to a maximum of 160 meters.



## KIT-DL

**Anti fog kit for beam detector FIREBEAM XTRA.** Specially developed to overcome the problems of condensation, this special kit contains a reflector and lens cover that have been treated with a special Nano technology finish that will not mist over.



## REF-DL

**Anti fog reflector.** A single reflector with a nano technology finish, sold singularly.



## SOP-DL

**Adjustable wall fixing for beam detector FIREBEAM XTRA.** A very high quality aluminum fully adjustable bracket that can be accommodate both the beam head and the reflector.



## STI-9861

**Galvanized steel cage coated with white polyester for the protection for beam detector from accidental or malicious blows that could misalign and / or affect the correct operation of the device.** The grille is made of 9 gauge steel with polyester coating resistant to the corrosion. Dimensions: 160 x 186 x 143 mm



## STI-9862

**Galvanized steel cage coated with white polyester for the protection of the control keyboard for beam detector.**

## Duct detector



### DCON-DC700 (FDD-710)

**Ventilation duct detectors installation camera.** Compatible with all conventional and addressable Detnov detectors. IP54. Detector and base not included. Sampling pipe length: 600mm. Dimensions: 180 x 253 x 183 mm.



### DCON-TC700

**Pipe for the duct detector DCON-DC700.** 1,5 meters length for big size ducts.



### DCON-BM700

**Mounting arm for uneven ducts for DCON-DC700 detection camera.**

## Residential fire alarm system



### CALYPSO-II

**Smoke detector for residential use.** Includes battery of high autonomy (10 years). Acoustic alarm indicator of 85dB at 3 meters and visual indicator (red pilot). Button for test of operation. Alarm neutralization function. Automatic reset. Acoustic low battery warning. Mounting to wall or ceiling. Mounting hardware included. Dimensions: Ø105 x 50 mm. Certificate CPR and EN114604: 2005 + AC: 2008.



### CALYPSO-II-R

**Wireless smoke detector for residential use.** High autonomy battery includes (10 years). Acoustic alarm indicator of 85dB at 3 meters and visual indicator (red pilot). Button for test of operation. Alarm neutralization function. Automatic reset. Acoustic low battery warning. Mounting to wall or ceiling. Mounting hardware included. Dimensions: Ø105 x 50 mm. Certificate CPR and EN114604: 2005 + AC: 2008. Wireless detector networks can be made up to 10 units.



### ACCTA043

**Wireless transmitter and receiver for Calypso-II-R detectors.** Relay output for interconnection with other devices (alarm centers, home automation, remote control unit, telephone transmitter, etc.). Dimensions: 83 x 83 x 46 mm. Red color, indoor use. Power from 9 to 28Vdc, not included.



### ACC0010

**Wireless sounder with flash for residential use.** Compatible with Calypso-II-R detectors. Acoustic power 90dB. IP 40. Low battery acoustic warning. Power: 2 LR6 9V batteries (included). Autonomy 300 warnings or 10 years at rest. Certifications EN50130-4: 2011 and EN61000-6-3: 2007 + A1: 2011. Dimensions: 140 x 120 x 80 mm



### ACC0014

**Wireless vibratory alert device, in case of emergency.** Designed for the hearing impaired, it is placed under the pillow and with vibration awakens the person when there is an alarm. Compatible with Calypso-II-R detectors. Autonomy: 300 cycles of vibration or 10 years at rest. Power: 2 AA 1.5V batteries, Dimensions: Ø 95 mm x H 35 mm.

## Power supply units



### FAD-902

**Power supply 24Vdc 2A, with battery charger, and 24 V output protected by fuse.** Mounted in metal box. Fault relay energized at rest and signaling by battery condition led, mains input, fuses, and grounding. Requires 2 BT1207 batteries not included. Dimensions: 315 x 325 x 91 mm.



### FAD-905

**Power supply 24Vdc 5A, with battery charger, and 24 V output protected by fuse.** Mounted in metal box. Fault relay energized at rest and signaling by battery condition led, mains input, fuses and grounding. Requires 2 BT1207 batteries not included. Dimensions: 315 x 325 x 91 mm.



### TUL373 EN

**Supervised power supply 24V 3A, with battery charger.** Built-in ammeter with 10 levels, indication of overload. 2 independent relay outputs (1 programmable mains absent and 1 battery failure). Opening tamper. Certified EN 54-4. Requires 2 batteries not included. Dimensions: 373 x 310 x 175 mm.



### TUL375 EN

**Supervised power supply 24V 5A, with battery charger.** Built-in ammeter with 10 levels, indication of overload. 2 independent relay outputs (1 programmable mains absent and 1 battery failure). Opening tamper. Certified EN 54-4. Requires 2 batteries not included. Dimensions: 373 x 310 x 175 mm

## CO control panels



### CMD-501

**Carbon monoxide control panel of 1 zone expandable up to 3 zones.** 32 detectors per zone. 2-wire installation without polarity, maximum distance of 2 km. 3 programmable level relays (extraction 1, extraction 2 and alarm). The relays can be configured for activation with a fault. Two shooting modes, standard (by value of each detector) or by the real average of the whole area. Test mode for the maintenance of the installation. Optional: TRMD-500 card allows the control of a speed regulator connected to an engine achieving energy efficiency and reduction of noise and vibrations. Housing made of ABS plastic, with possibility of being recessed. Dimensions: 439 x 268 x 112 mm. Power supply at 230 Vac. Certificate UNE 23300: 1984.



### CMD-502

**Carbon monoxide control panel of 2 zones expandable up to 3 zones.** 32 detectors per zone. 2-wire installation without polarity, maximum distance of 2 km. 3 programmable level relays (extraction 1, extraction 2 and alarm). The relays can be configured for activation with a fault. Two shooting modes, standard (by value of each detector) or by the real average of the whole area. Test mode for the maintenance of the installation. Optional: TRMD-500 card allows the control of a speed controller connected to an engine achieving energy efficiency and reducing noise and vibrations. Housing made of ABS plastic, with possibility of being recessed. Dimensions: 439 x 268 x 112 mm. Power supply at 230 Vac. Certificate UNE 23300: 1984.



### CMD-503

**Carbon monoxide control panel of 3 zones.** 32 detectors per zone. 2-wire installation without polarity, maximum distance of 2 km. 3 programmable level relays (extraction 1, extraction 2 and alarm). The relays can be configured for activation with a fault. Two shooting modes, standard (by value of each detector) or by the real average of the whole area. Test mode for the maintenance of the installation. Optional: TRMD-500 card allows the control of a speed regulator connected to an engine achieving energy efficiency and reduction of noise and vibrations. Housing made of ABS plastic, with possibility of being recessed. Dimensions: 439 x 268 x 112 mm. Power supply at 230 Vac. Certificate UNE 23300: 1984.

## CO control panels accessories



### MMD-509

**Expansion module for CMD-500 carbon monoxide control panels.** Up to 32 detectors per module. Installation with 2 wires without polarity.



### TRMD-500

**Expansion card for CMD-500 carbon monoxide control panels.** It allows the connection of up to 3 speed regulators for the control of the ventilation / extraction motors, obtaining optimum motor performance in addition to energy efficiency of the installation.



## CO detectors



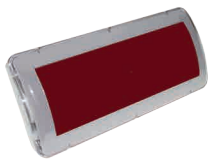
### DMD-500

**Standard carbon monoxide detector with electrochemical cell with deep base included.** Connection to 2 wires without polarity. Diagnostic LED. Resolution: 1 ppm. Certificate UNE 23300: 1984. Dimensions: 77x100 mm. Ten years life time.



### DMDP-500

**Compact carbon monoxide detector with electrochemical cell.** Antivandal protection (wall fastening, shock resistance, protection against water). Connection to 2 wires without polarity. Diagnostic LED. Resolution: 1 ppm. Certificate UNE 23300: 1984. Dimensions: 93 x 93 x 55 mm. Ten years life time.



### DOA FJ/CPD (SP-M)

**Light indicator with buzzer.** 24Vdc power supply. High brightness LED lighting. Polycarbonate case with transparent front. White color. Label "DO NOT ENTER EXCESS OF CO" included. CPR certificate EN54-3.







 **detnov**  
Fire System Products

---

Carrer de la Ciència, nº 30-32  
08840 Viladecans - Barcelona (Spain)  
+34 93 371 60 25  
info@detnov.com



[www.detnov.com](http://www.detnov.com)